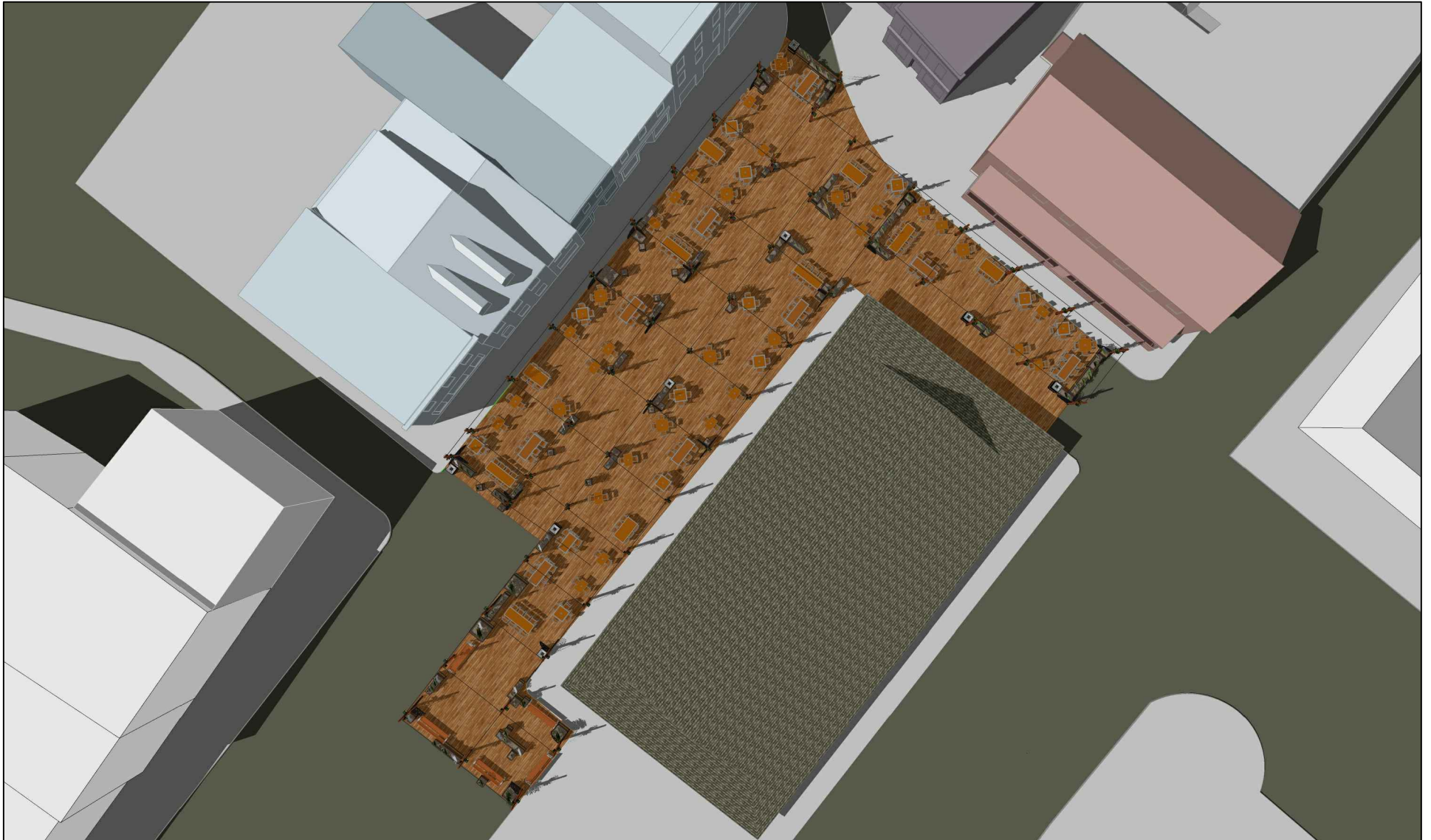


MARKET SQUARE

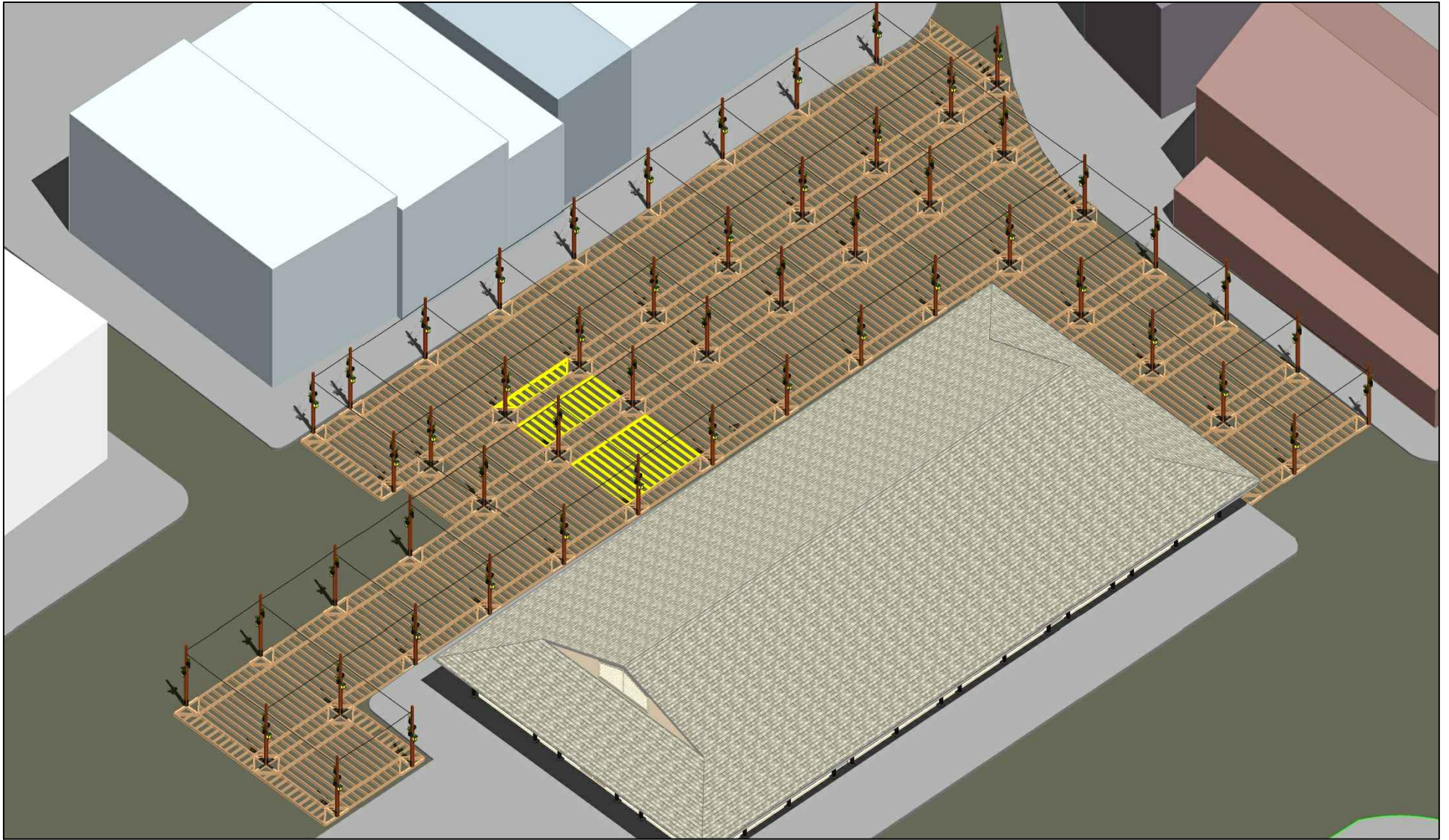
A SHADED, LEAFY PLACE FOR GATHERING AND DINING



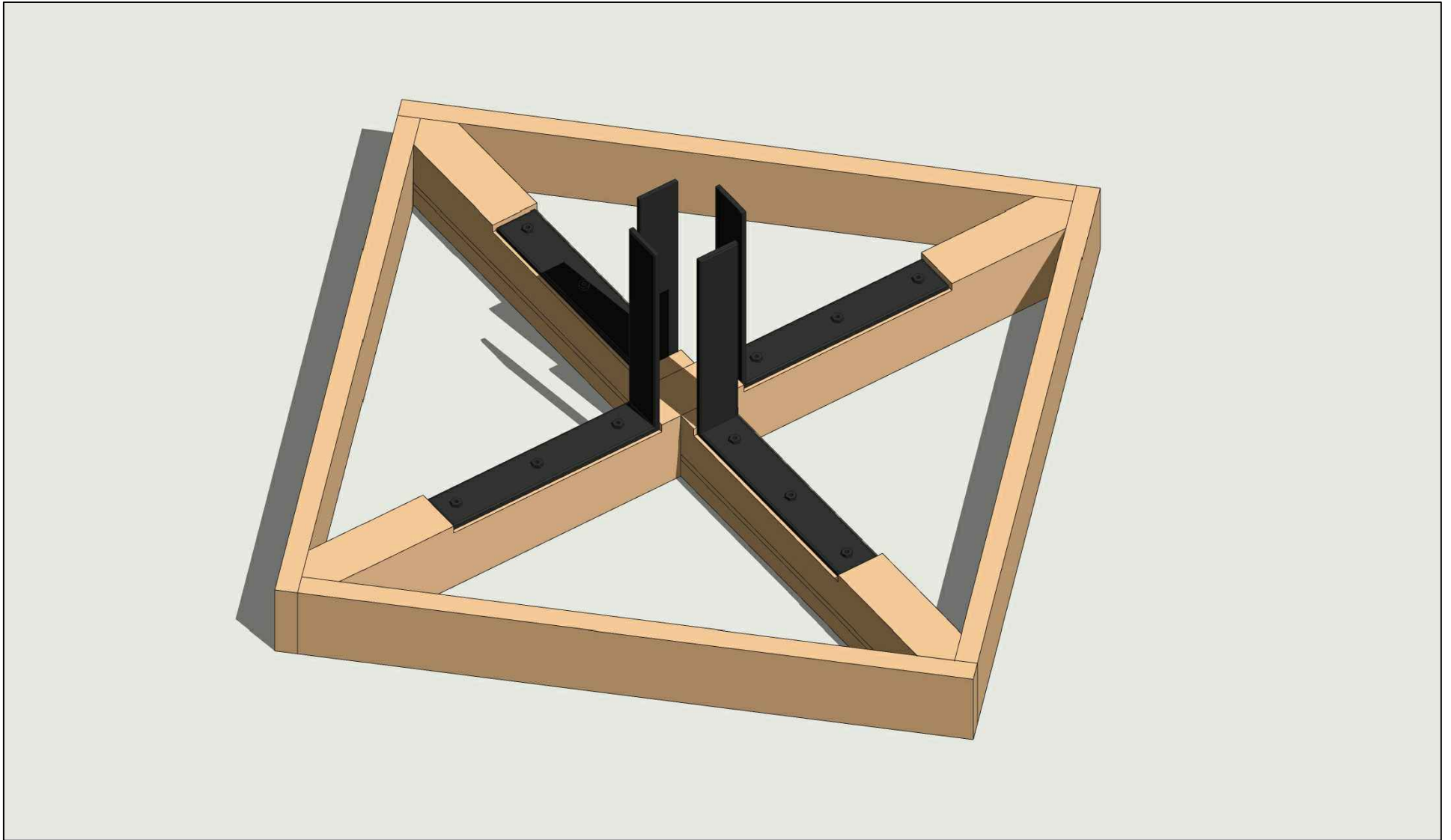
**A CURB-HEIGHT DECK IS FURNISHED WITH PLANTERS
AND A VARIETY OF SEATING ACCOMMODATIONS**



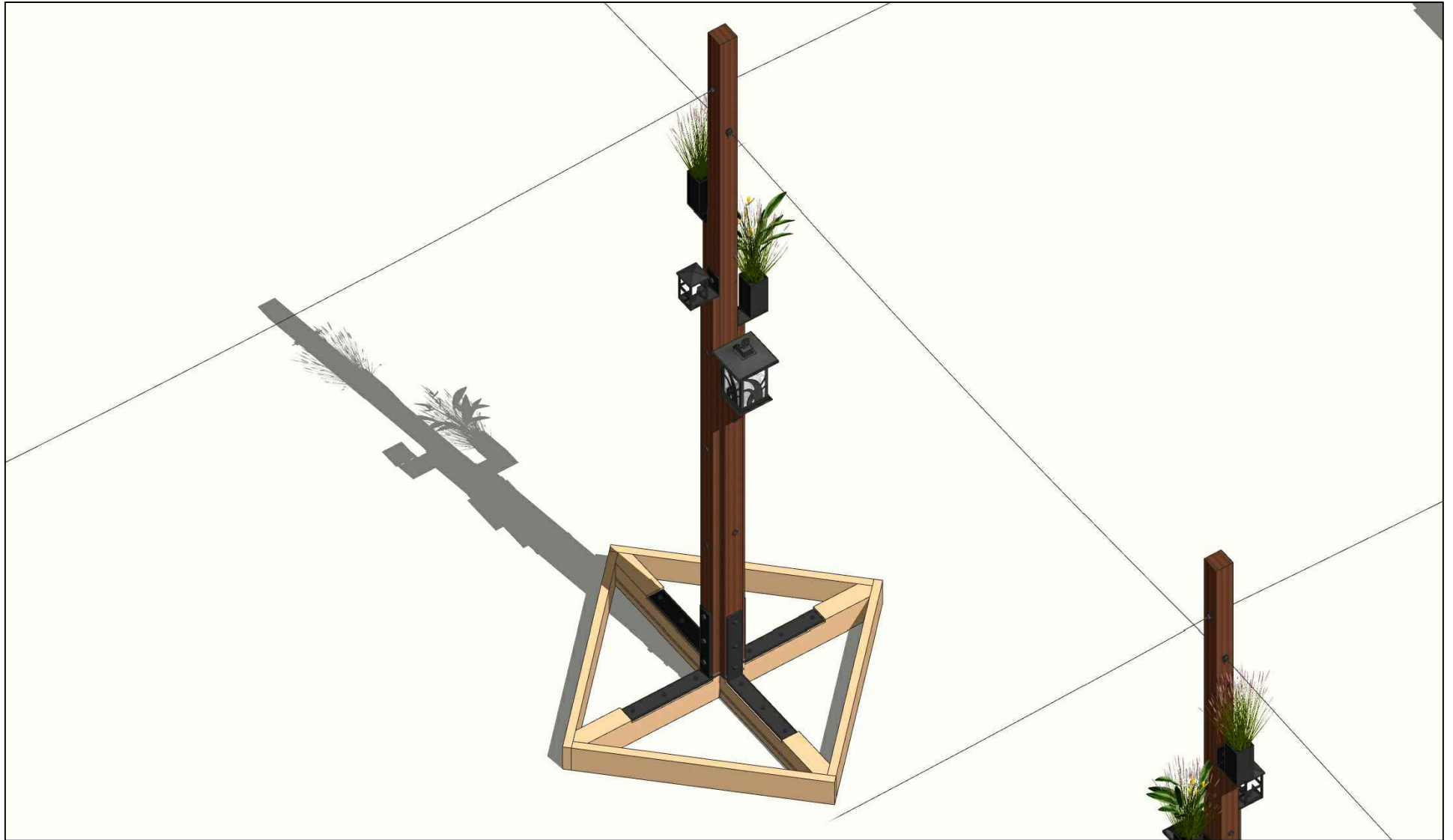
THE WARM, RICH SETTING IS BUILT OF NATURAL,
TRADITIONAL MATERIALS, AND GENEROUSLY PLANTED



THE SYSTEM OF CONSTRUCTION IS MODULAR, PANELIZED,
SCALABLE, AND PHASEABLE, COMPRISING FOUR COMPONENTS:
HUBS, MASTS, FRAMING PANELS, DECKING



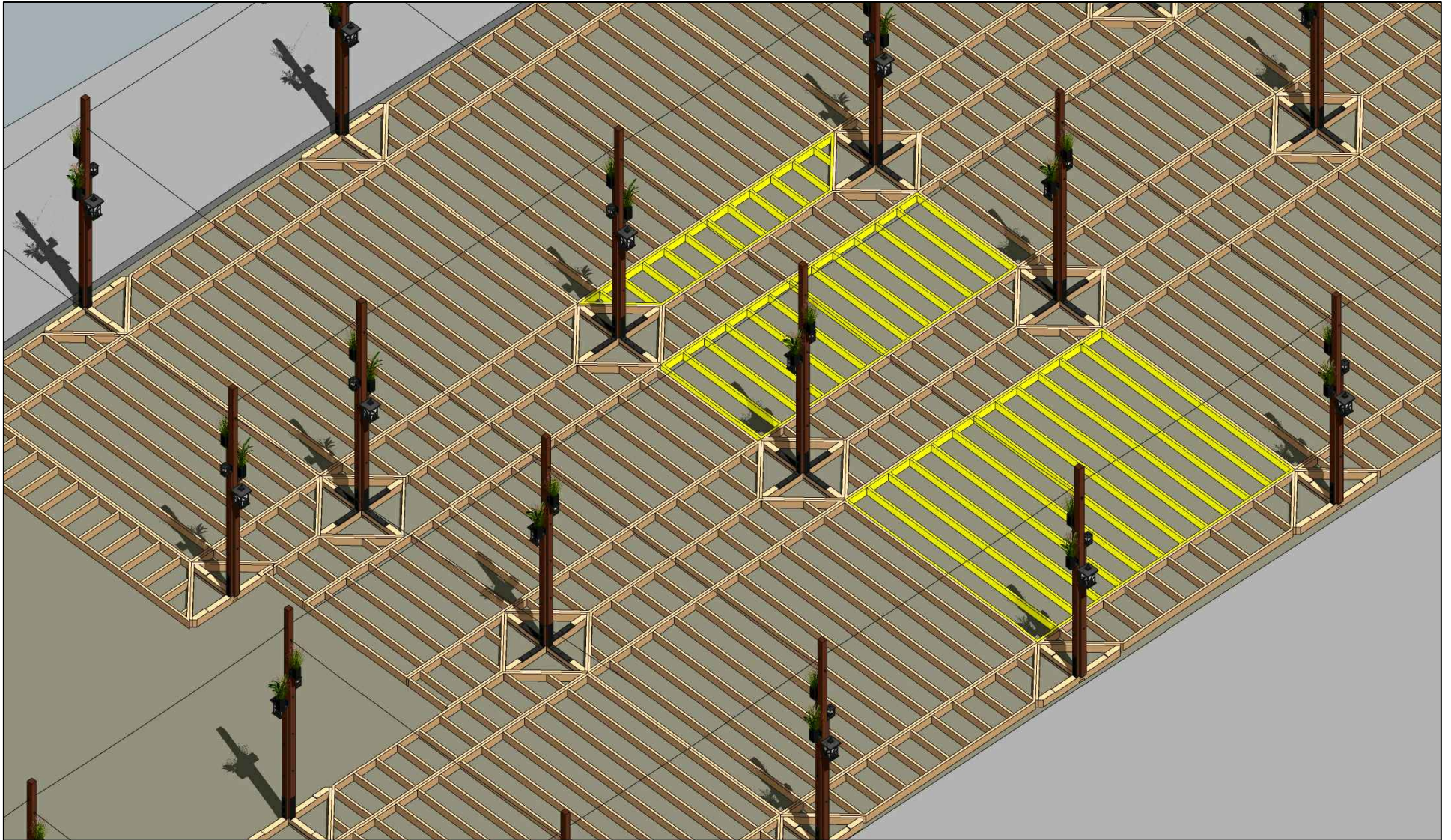
THE WOODEN FRAMING HUBS INCORPORATE
HEAVY STEEL ANGLES TO SUPPORT THE MASTS



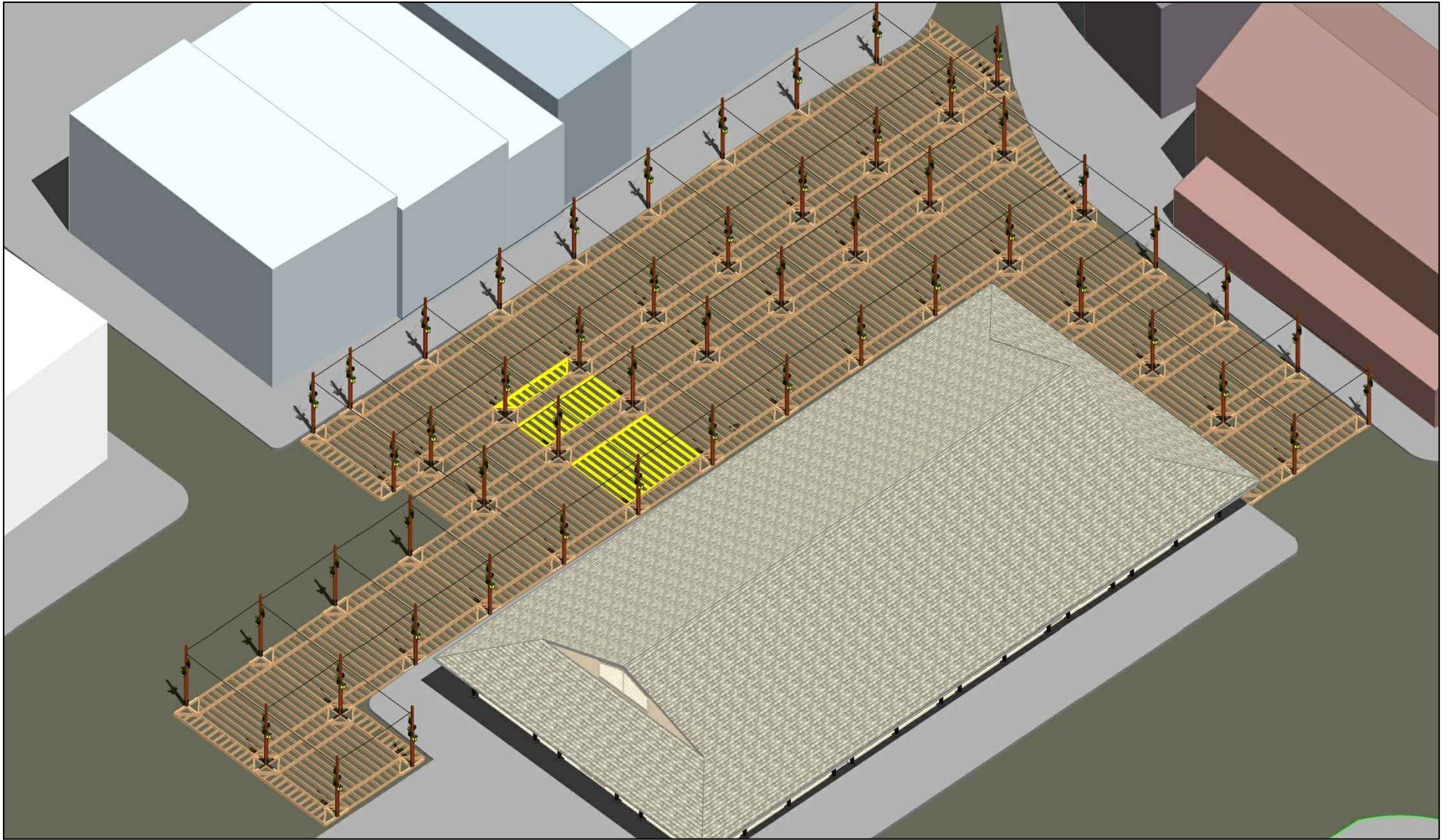
THE MASTS ARE BUILT OF A CENTRAL FIR 4X4 AND FOUR FIR 2X4s OF VARYING LENGTHS, ALL CONNECTED WITH BLACK SQUARE-HEAD LAG SCREWS. A CABLE SYSTEM NEAR THE TOP CONNECTS ALL MASTS.



ON THE MASTS ARE MOUNTED LIGHTS AND SMALL
RECTANGULAR FLOWER VESSELS. THE CABLE SYSTEM
IS TYPICAL OF THOSE USED FOR DECK RAILINGS



DECK FRAMING PANELS SPAN BETWEEN HUBS.
THERE ARE THREE TYPES OF FRAMING PANELS.



TOGETHER, HUBS, FRAMING PANELS, MASTS, AND CABLES
CONTRIBUTE TO A UNIFIED STRUCTURAL SYSTEM...



...THAT IS COMPLETED BY INSTALLATION OF DECKING,
AND BRACING FRAMES



STRUCTURAL AND ORNAMENTAL BRACING FRAMES ARE PROVIDED AT LOCATIONS AND INTERVALS AS NEEDED FOR STRUCTURAL STABILITY. THE FRAMES ALSO HELP DEFINE SPACES ALLOCATED TO INDIVIDUAL VENDORS M



THE SUNSHADING CANOPY IS OF LOOSELY-WOVEN MATERIAL, CONNECTED TO CABLES AT TWO HEIGHTS. THE VARIED SHAPES AND THE TWO HEIGHTS CONVEY AN ORGANIC QUALITY.



THE SPACE IS WARM, NATURAL, WELCOMING



THE NEW MARKET SQUARE WILL CONNECT
AND INTEGRATE WITH HOPKINS PLAZA



CORRIDORS CONSERVE VIEWS OF CITY DOCK